

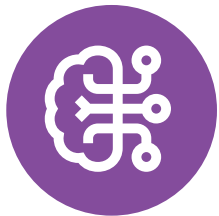


رؤية جامعة جدة
برنامج مجال
تركيز الجامعة



TRANSPORTATION AND LOGISTICS AROUND THE WORLD IN MAY

A monthly global newsletter in
transportation and logistics



C.H. Robinson Innovates with AI-Driven Email Automation Platform

C.H. Robinson is transforming its communication with shippers by introducing a new artificial intelligence platform designed to automate email responses. This system analyzes incoming emails and performs actions such as delivering price quotes, managing load tenders, scheduling pickups, and providing tracking updates. Previously limited to users of its digital platform, now even email-based shippers can enjoy instant responses, enhancing efficiency and speed. This innovation addresses the high volume of daily inquiries, notably the 11,000 emails requesting truckload freight quotes, streamlining operations and significantly reducing response times and operational costs in the logistics sector.

[CLICK HERE TO VIEW THE SOURCE](#)





Mahindra & Mahindra Targets Fivefold Growth in Logistics, Aiming for \$1.22 Billion Revenue by FY26

Mahindra & Mahindra (M&M) is targeting a fivefold increase in its logistics business over the next five years, as shared by Dr. Anish Shah, MD and CEO, during a post-results conference call. This growth is aligned with India's broader industrial expansion goals, specifically the Viksit Bharat initiative and anticipated manufacturing growth, where logistics is seen as pivotal. Despite a previous loss of approximately USD 6.7 million in this sector, improved execution has M&M optimistic for FY25. The company aims to become a logistics service provider with an annual revenue target of approximately USD 1.22 billion by FY26, focusing on contract logistics, B2B express, last-mile delivery for e-commerce, and ocean and air freight forwarding, thus positioning itself strongly in the logistics domain.

CLICK HERE TO
VIEW THE SOURCE





Dubai Port World Invests Heavily in Jeddah Islamic Port to Boost Saudi Logistics

Dubai Port World plans to invest 900 million SAR (250 million USD) in a new logistics zone at Jeddah Islamic Port, boosting its total investment in Saudi Arabia to about 4 billion SAR (over 1 billion USD). This project is part of Saudi Arabia's broader initiative to invest 1.6 trillion SAR (427 billion USD) in its transportation and logistics sector over the next decade, aiming to transform the Kingdom into a global logistics hub. The logistics zone, covering 415,000 square meters, will be developed in two phases, with operations commencing in the second quarter of next year. Additionally, Saudi Arabia aims to capture 50% of the regional trans-shipment market by 2030.

CLICK HERE TO
VIEW THE SOURCE



Emaar The Economic City and Aramex Partner for Sustainable Logistics in KAEC

Saudi Arabia's Emaar The Economic City has partnered with UAE-based Aramex to advance sustainable logistics in King Abdullah Economic City (KAEC). This collaboration focuses on deploying innovative logistics solutions to minimize environmental impact and enhance operational efficiency. One key initiative involves the introduction of Aramex's multi-compartment delivery bots, which are electrically powered and emit zero emissions. These bots can handle multiple deliveries per trip, significantly reducing carbon footprints and optimizing logistics operations.

The partnership aligns with Saudi Arabia's Vision 2030, aiming to transform the logistics sector into a more sustainable and efficient one. The use of these autonomous delivery robots is expected to improve operational speed, reduce costs, and enhance sustainability. The agreement reflects a significant stride towards green logistics within KAEC and showcases a commitment to implementing eco-friendly logistics solutions.

In 2023, Aramex expanded its presence by opening a new regional office in Riyadh, indicating a strengthening of its operations in Saudi Arabia. The company also reported significant net profits, contrasting with the net losses posted by Emaar The Economic City, highlighting the varying financial health within the sector.



[CLICK HERE TO VIEW THE SOURCE](#)



Enhancements to myDHLi: Advancing Logistics with AI and Sustainability Focus

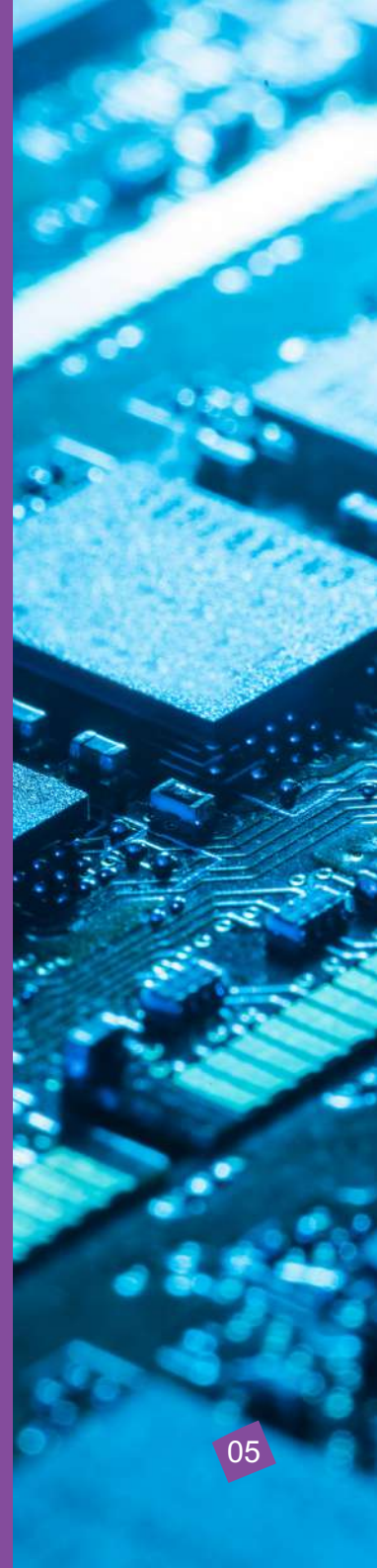
A significant feature is the integration of generative AI through the myDHLi Virtual Assistant, which provides 24/7 support via chatbot, enabling users to quickly access shipment details and contract information. This AI tool improves efficiency and user experience, catering to the daily management needs of supply chains.

The redesigned myDHLi Track feature now displays all shipment information on a single screen, improving accessibility and reducing the need to scroll. It also includes advanced filters for detecting exceptions, allowing for faster response to changes and better decision-making.

Sustainability is a core component, with options like GoGreen Plus for reducing emissions through sustainable fuels. Enhanced analytics and the updated GoGreen dashboard offer detailed insights into environmental impacts and support users in aligning their operations with sustainability goals, promoting responsible logistics practices.



[CLICK HERE TO VIEW THE SOURCE](#)



NHC and CITIC Construction Partner to Develop Industrial City and Logistics Zones in Saudi Arabia

"The National Housing Company (NHC) of Saudi Arabia has partnered with China's CITIC Construction to develop an industrial city and logistics zones for building materials in Saudi Arabia. This development will include the establishment of 12 factories aimed at enhancing the supply chain for NHC's residential projects. The deal was signed during the official visit of Saudi Minister of Municipal, Rural Affairs and Housing, Majed bin Abdullah Al-Hogail, to China, in the presence of NHC CEO, Mohammed bin Saleh Albuty.

This collaboration is part of a broader effort to ensure timely, high-quality delivery of housing projects and to leverage Chinese expertise in manufacturing alongside local Saudi production capabilities. The project intends to elevate operational standards to international levels and attract top service providers across various sectors. This initiative is expected to significantly boost the economic and developmental impact of the real estate sector in the Kingdom by improving the quality of housing units and fostering the localization of the building materials industry.

Furthermore, the agreement is an extension of the comprehensive strategic partnership between Saudi Arabia and China, aimed at enhancing cooperation in the housing sector and supporting the expansion of both medium and small local factories, thus enriching the local building materials industry and creating more job opportunities.



[CLICK HERE TO
VIEW THE SOURCE](#)



Widespread Incidents of Software Supply Chain Attacks

"According to a report by the Ponemon Institute, 59% of organizations have experienced an attack on their software supply chain, with 54% of those attacks occurring in the past year. The survey included 1,278 IT and IT security practitioners, with managers and senior executives making up about half (49%) of the respondents. 28% of participants indicated that an attack was due to a previously discovered but unpatched open-source security vulnerability, while 23% attributed the attack to a zero-day vulnerability. Among these organizations, 50% took more than a month to respond to the incident. The responses suggest a lack of commitment from the organizations and/or executives to mitigate the risks associated with malicious code/malware. Only 45% reported that their organizations had implemented a system to defend against malicious open-source packages, and only 39% believed that their senior leadership was highly committed to mitigating these risks in their software supply chains."



[CLICK HERE TO VIEW THE SOURCE](#)



Spark Logistics Services Signs MoUs with ESAB and Petromsavi

Spark Logistics Services, a joint venture between King Salman Energy City (SPARK) and Hutchison Ports, has signed MoUs with ESAB and Petromsavi during the "Breakbulk Middle East" conference in Dubai. These agreements facilitate the leasing of pre-built facilities at SPARK's dry port to serve as manufacturing and distribution centers for the two companies in the oil and gas sector. This collaboration aims to enhance supply chain efficiency and expand product distribution in alignment with Saudi Arabia's vision to become a global logistics hub. These partnerships are expected to create over 100 new jobs and contribute to the economic development and talent enhancement in the region.



[CLICK HERE TO VIEW THE SOURCE](#)

رؤية جامعة جدة
برنامج مجال
تركيز الجامعة



Editorial Board

